

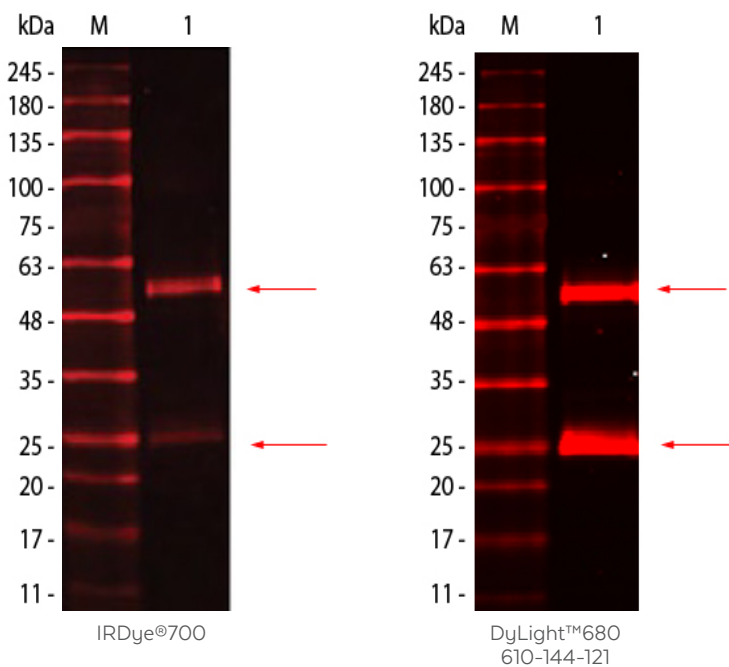
## DYLIGHT™ FLUORESCENT DYE CONJUGATES

DyLight™ conjugated antibodies are high-performance fluorescent conjugates for use in primary or secondary antibody assays such as fluorescence microscopy, flow cytometry, western blotting, ELISA, high-content screening, multiplex assays, and other array platforms. The antibodies are offered as highly functional conjugates with bright emission spectra that match the principal output wavelengths of common fluorescence instrumentation.

Emission	Fluorochrome	Abs (nm)	Em (nm)	MW (daltons)	Spectrally Similar
Blue	DyLight™ 405	420	400	793	Alexa Fluor 350
Green	DyLight™ 488	493	518	1,011	Alexa Fluor 488, FITC, Fluorescein
Yellow	DyLight™ 549	550	568	982	ATTO 532, Rhodamine, R-Phycoerythrin, Cy3™
Red	DyLight™ 649	649	674	1,008	ATTO 655, Allophycocyanin, Cy5™
Near Infrared	DyLight™ 680	682	715	950	IRDye®700, Alexa Fluor 680, Cy5.5™
Infrared	DyLight™ 800	770	794	1,050	IRDye®800, Alexa Fluor 790, Cy7™



## MOUSE IGG (H&L) ANTIBODY



### HIGH FLUORESCENCE INTENSITY & PHOTOSTABILITY

- High-intensity emission provides outstanding sensitivity and requires less conjugate
- Negligible bleed-through between fluorophore channels enables multi-color detection
- Exceptional resistance to photobleaching
- Buffers are completely stable at pH 4-9
- DyLight™ is compatible with filter and laser settings on popular fluorescence instrumentation

# FLUORESCENT LABELS FOR ANTIBODY CONJUGATION

Rockland offers DyLight Fluorescent Dye Conjugates for use with Fluorescence based detection systems using the near-UV (blue through near-IR (red) spectrum on systems.

FLUORESCENT DYES					
	Abs (nm)	Em (nm)		Abs (nm)	Em (nm)
DyLight™ 405	400	420	ATTO 550	554	576
Aminomethylcoumarin (AMCA)	353	442	Cy3.5™	581	596
ATTO 425	436	484	Texas Red®	596	620
Cy2™	489	505	ATTO 594	601	627
DyLight™ 488	493	518	Allophycocyanin	650	660
ATTO 488	501	523	Cy5™	650	667
Fluorescein	495	528	ATTO 647N	644	669
ATTO 532	532	553	DyLight™ 649	646	674
Cy3™	552	565	ATTO 655	663	684
DyLight™ 549	550	568	Cy5.5™	689	703
Rhodamine (TRITC)	550	570	DyLight™ 680	682	715
R-Phycoerythrin (RPE)	488	575	DyLight™ 800	770	794

## Enzymatic

Alkaline Phosphatase	Beta Galactosidase	Horseradish Peroxidase
----------------------	--------------------	------------------------

## Haptens

Biotin	Biomagnetic Particles	Streptavidin	Protein A/G
--------	-----------------------	--------------	-------------

### Compatible Imaging Systems:

- Li-Cor Odyssey®
- Bio-Rad Chemi-Doc™ MP
- UVP BioSpectrum®
- Protein Simple Fluorochem
- GE Healthcare Typhoon Systems
- Leica STED Microscopy
- Nikon Confocal
- Nikon Super-Resolution
- Syngene G:BOX Gel Image System